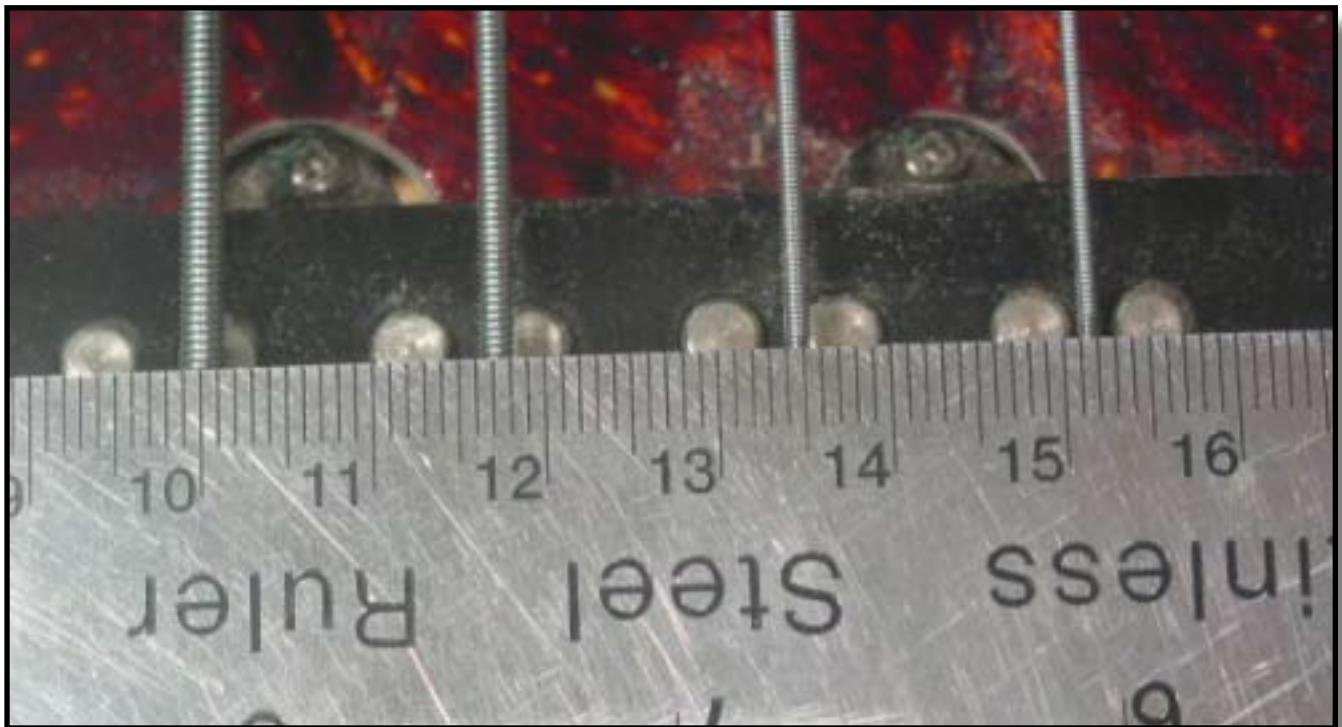


CALCULATING STRING SPACING OVER PICKUPS:

MEASURE FROM THE CENTER OF THE LOWEST STRING TO THE CENTER OF THE HIGHEST STRING OVER THE CENTER OF THE PICKUP.

IN THE EXAMPLE HERE, STARTING AT 100MM AND ENDING AT 151.5MM. THE STRING SPACING IS ABOUT 51.5MM TOTAL.

THIS MEASUREMENT IS MOST COMMONLY DONE IN MILLIMETERS. CALCULATING STRING SPACING IS OFTEN IMPORTANT IN ORDERING CUSTOM PICKUPS AND DECIDING WHETHER A PARTICULAR PICKUP WILL ACCOMODATE A CERTAIN STRING SPACING.



BESTBASSGEAR LLC

THE FINEST IN BASS PICKUPS, PREAMPS, & OTHER BASS-SPECIFIC NECESSITIES

WWW.BESTBASSGEAR.COM - SALES@BESTBASSGEAR.COM