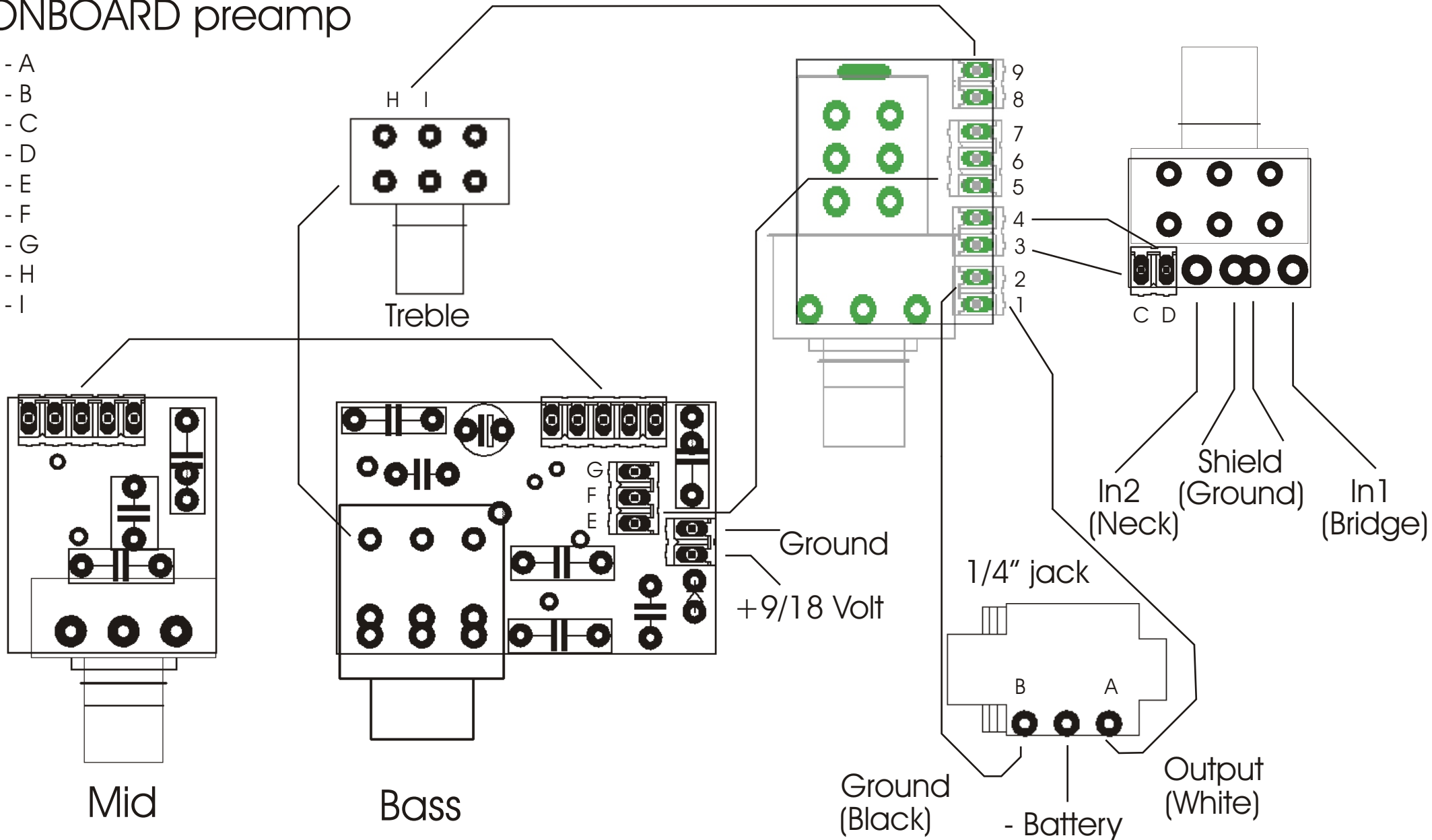


GLOCKENKLANG ONBOARD preamp

- 1 - A
- 2 - B
- 3 - C
- 4 - D
- 5 - E
- 6 - F
- 7 - G
- 8 - H
- 9 - I

Active = pushed
Passive = pulled Volume

Balance



For any help, please, contact us directly: service@glockenklang.de or phone +49(0)5221-51506